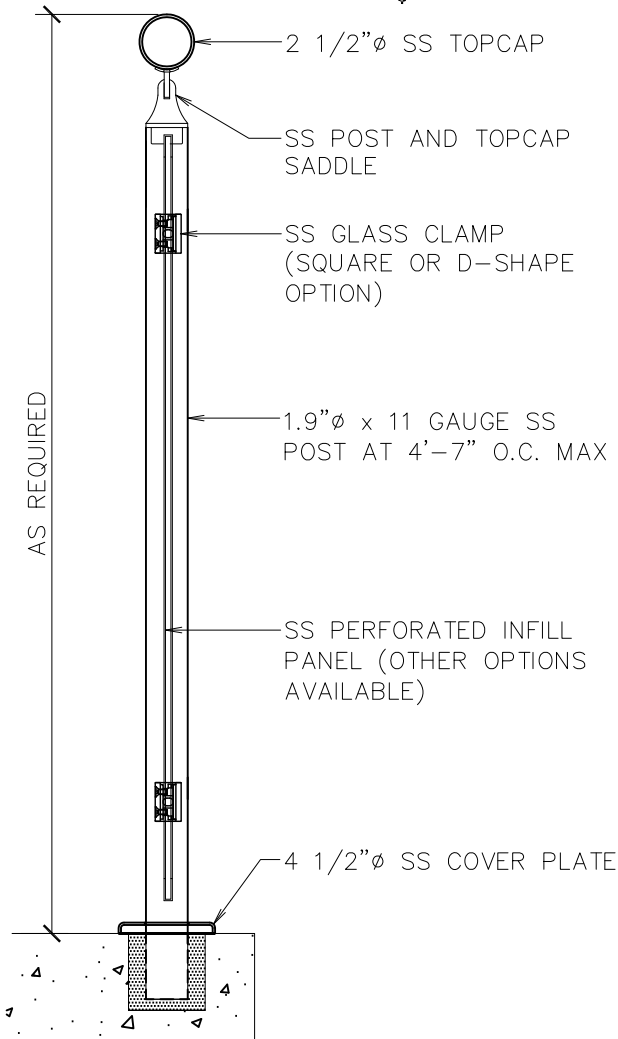


Regency™

Regency by Architectural Railings & Grilles
(704) 365-5152



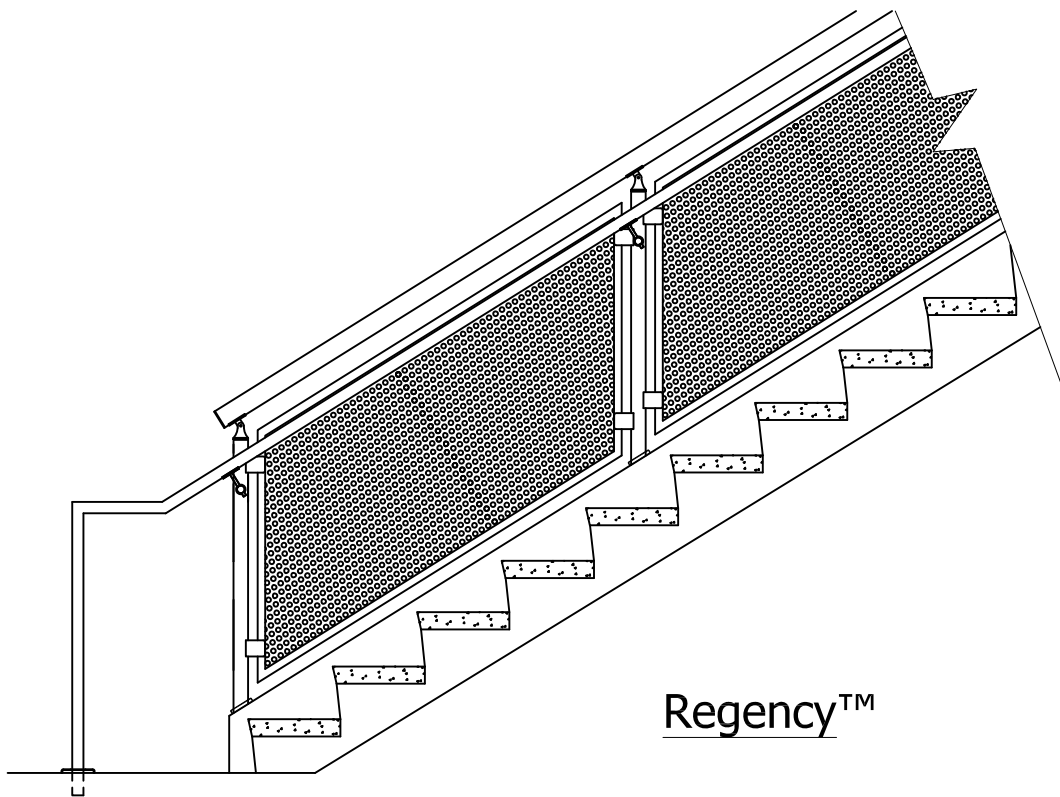
RAIL DESIGN: *Regency*



Architectural
Railings & Grilles
Fort Mill, SC
(704)-365-5152

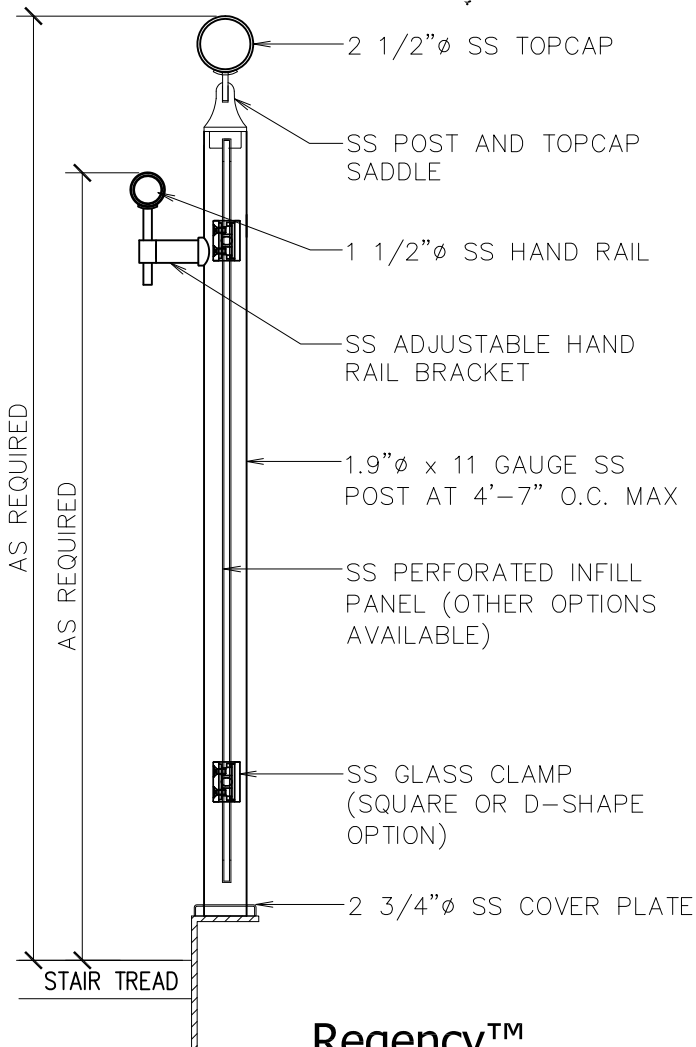
Please visit our
website for
available options
and materials.
www.stainless-railing.com

Regency™



Regency™

Regency by Architectural Railings & Grilles
(704) 365-5152



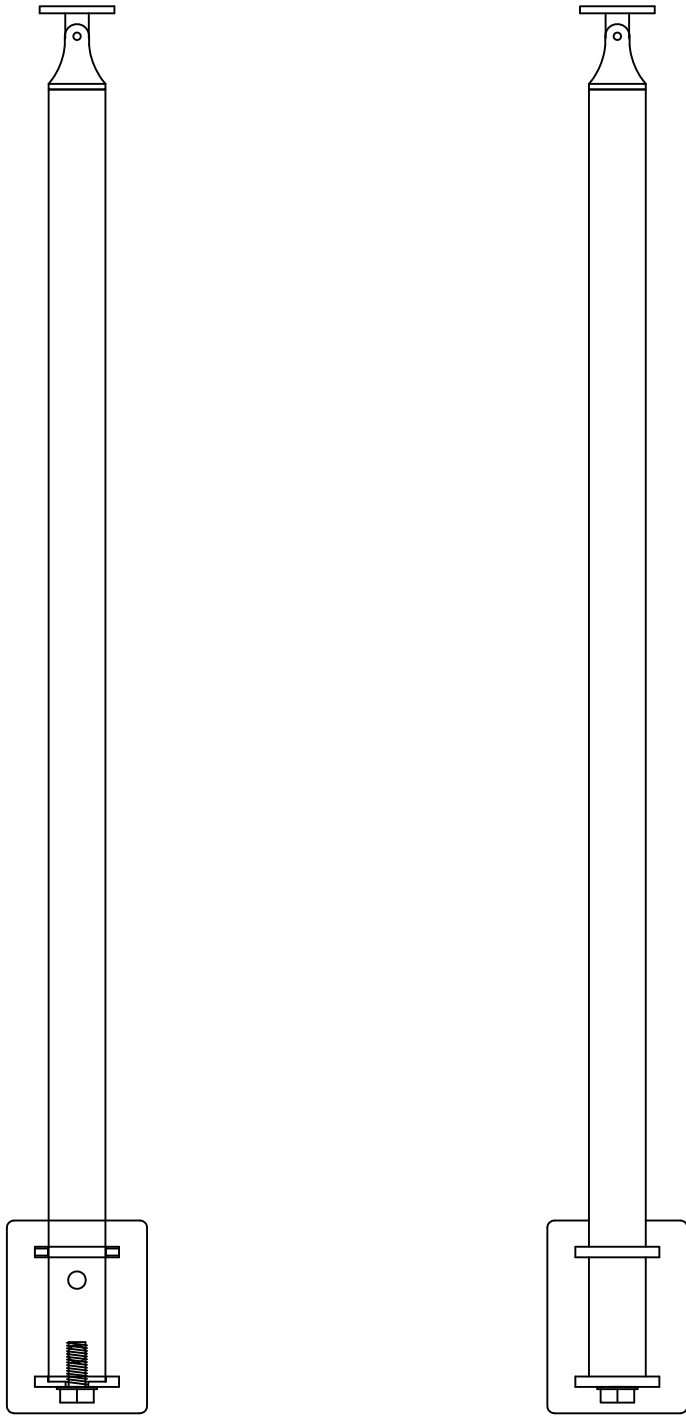
RAIL DESIGN: Regency



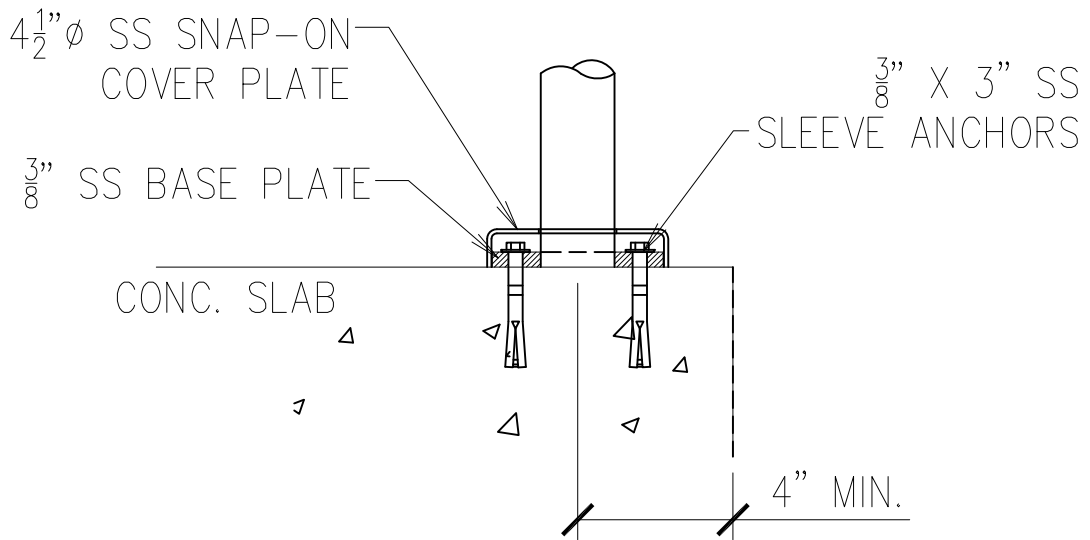
Architectural
Railings & Grilles
Fort Mill, SC
(704)-365-5152

Please visit our
website for
available options
and materials.
www.stainless-railing.com

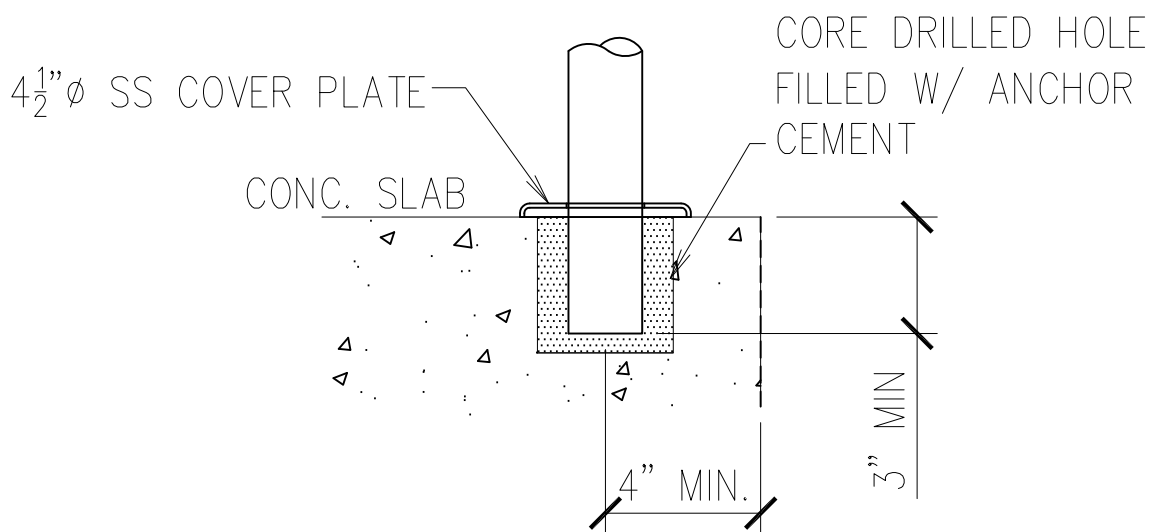
Regency™



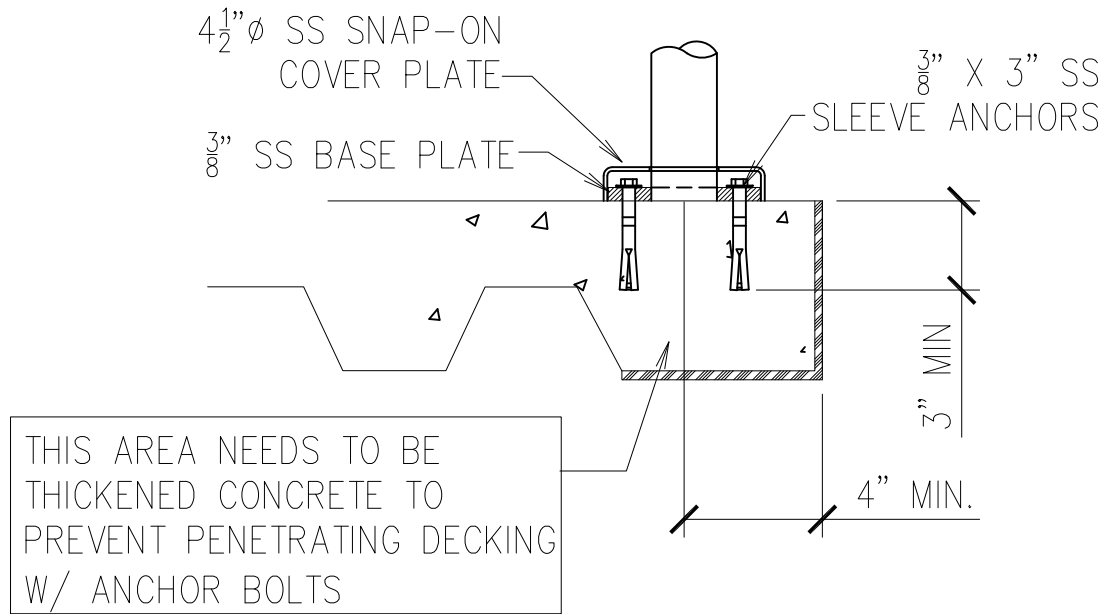
SIDE MOUNT
BRACKET ELEVATION



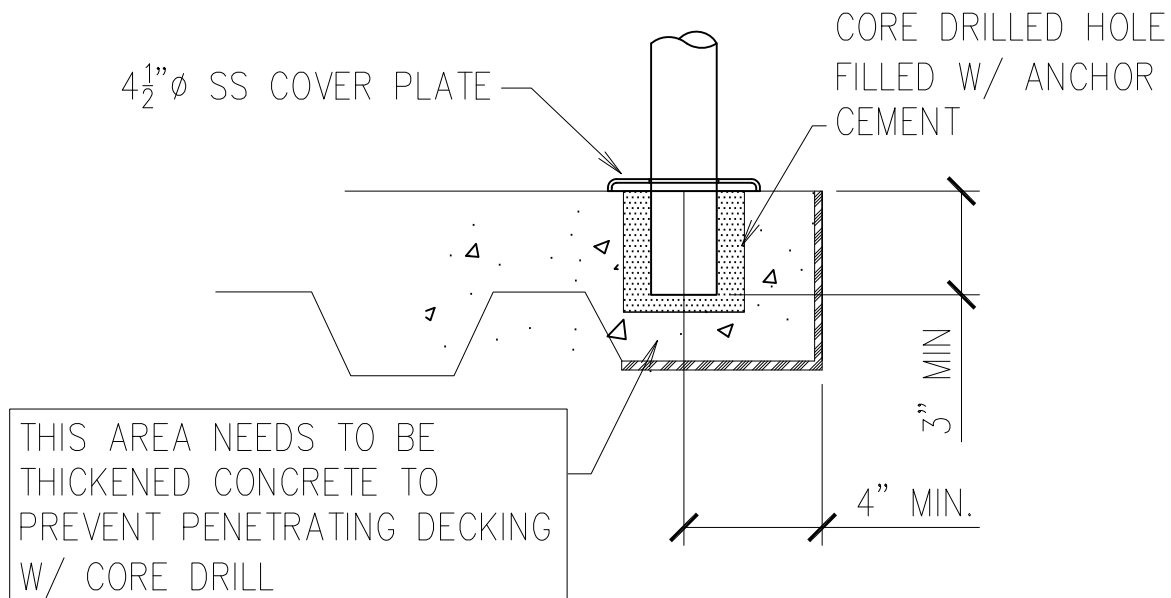
BASE PLATE MOUNTING



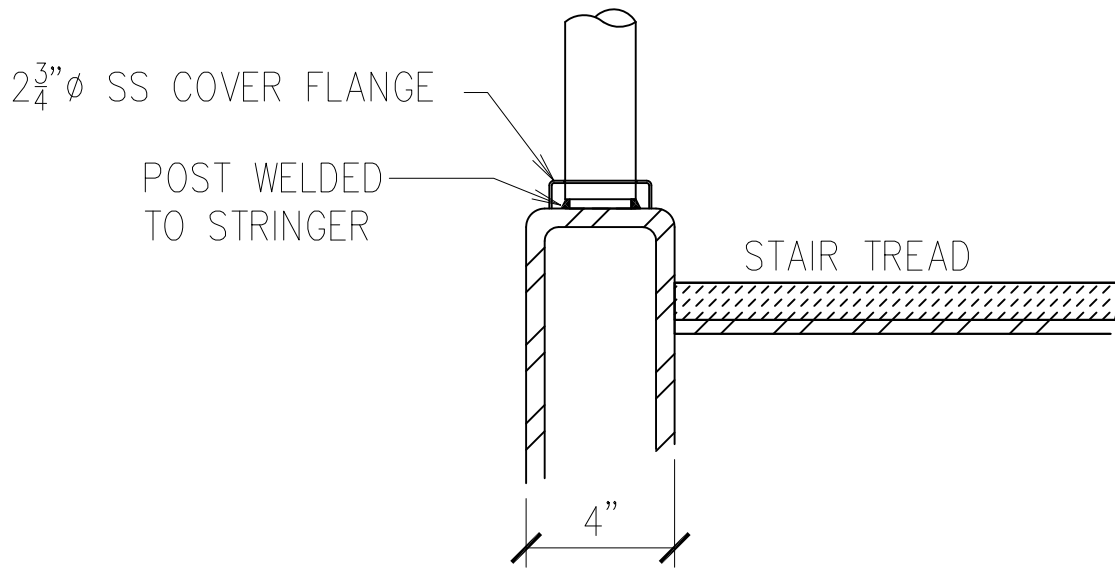
CORE DRILL MOUNTING



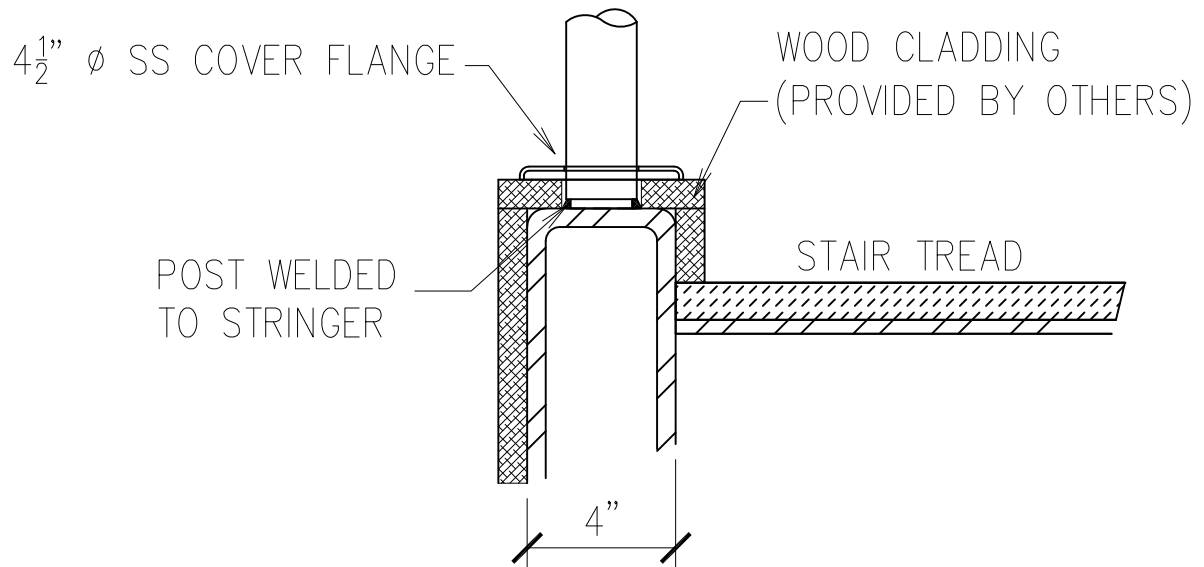
CORE DRILL MOUNTING
OVER CORRUGATED DECKING



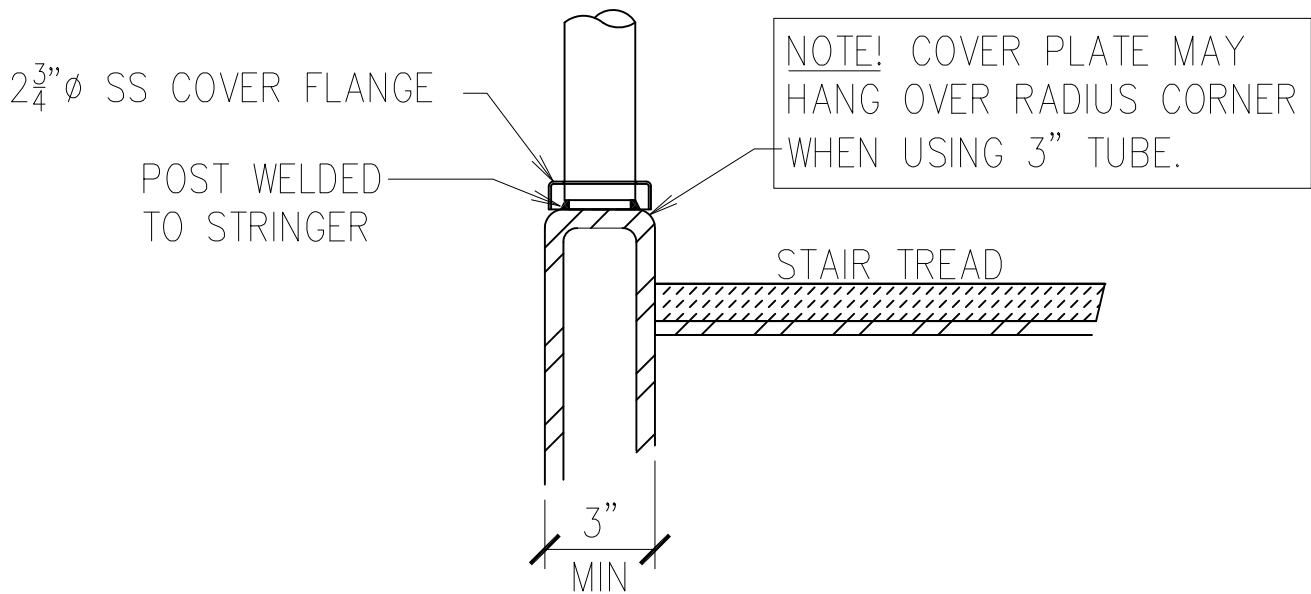
CORE DRILL MOUNTING
OVER CORRUGATED DECKING



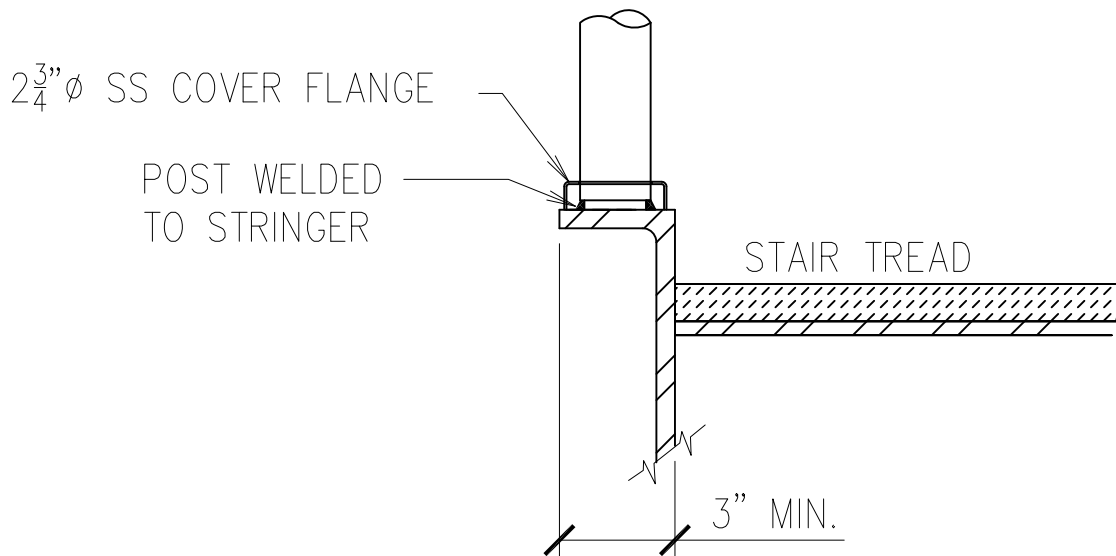
WELDED STAIR MOUNTING
(4" TUBE STRINGER)



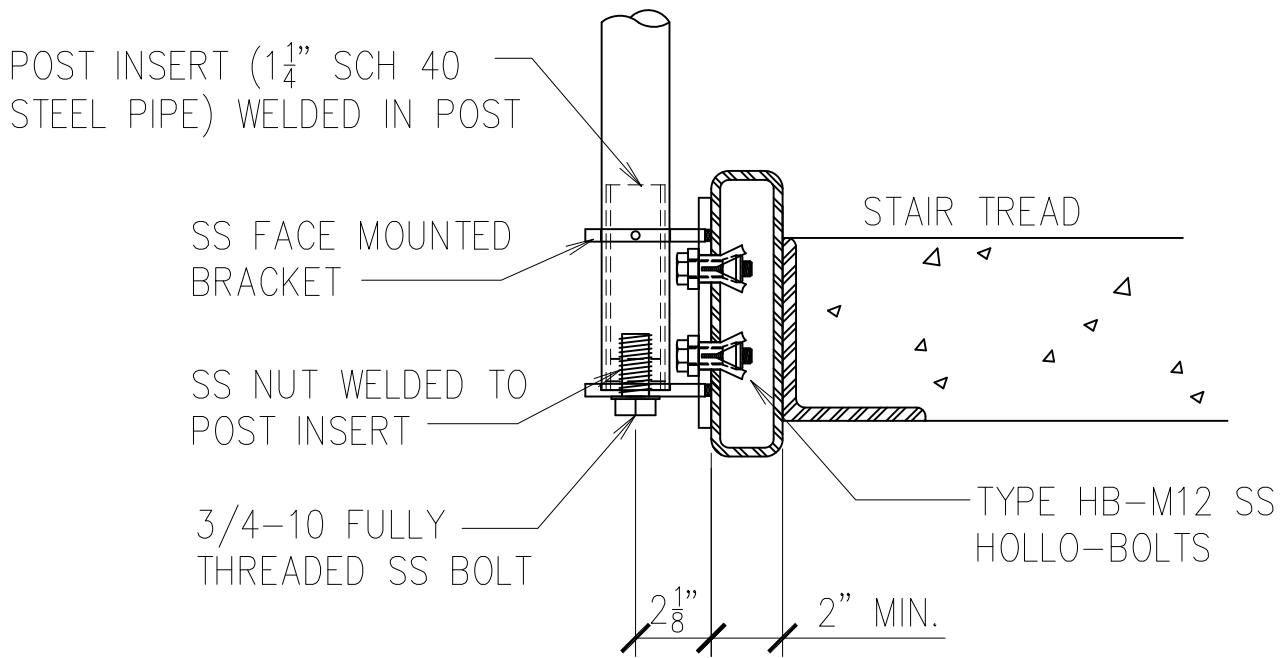
WELDED STAIR MOUNTING
W/ WOOD CLADDING



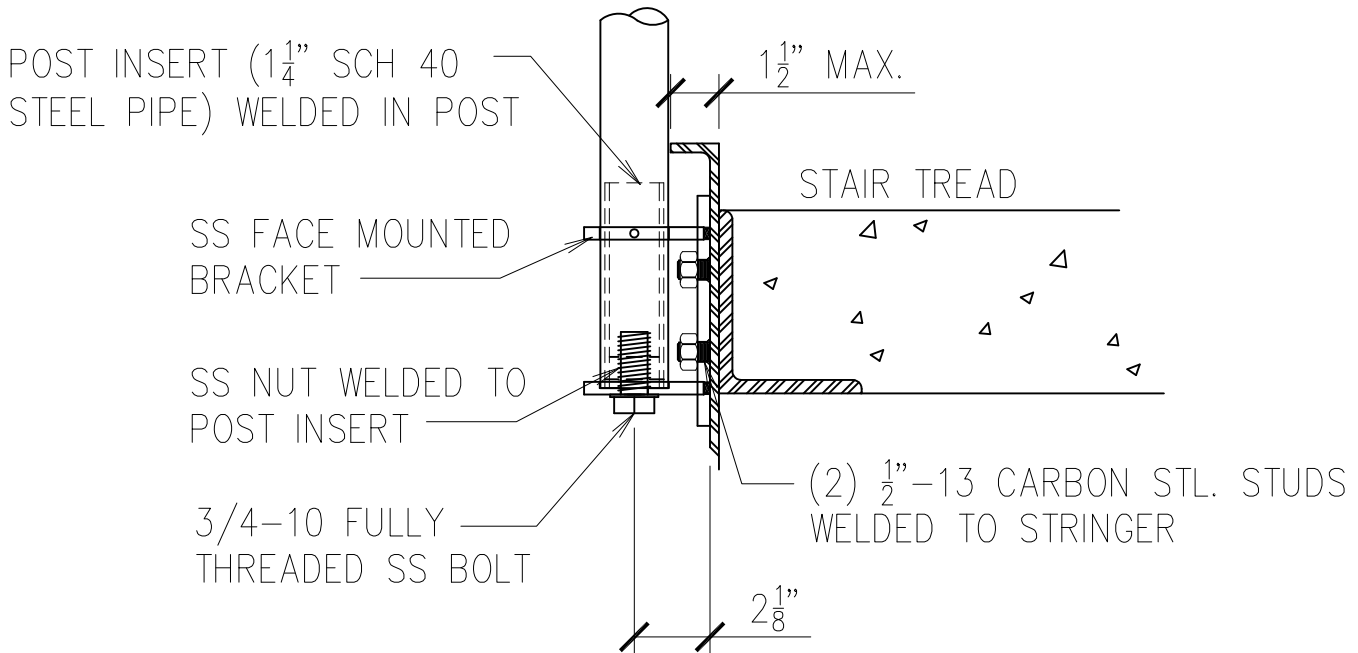
WELDED STAIR MOUNTING
(3" TUBE STRINGER)



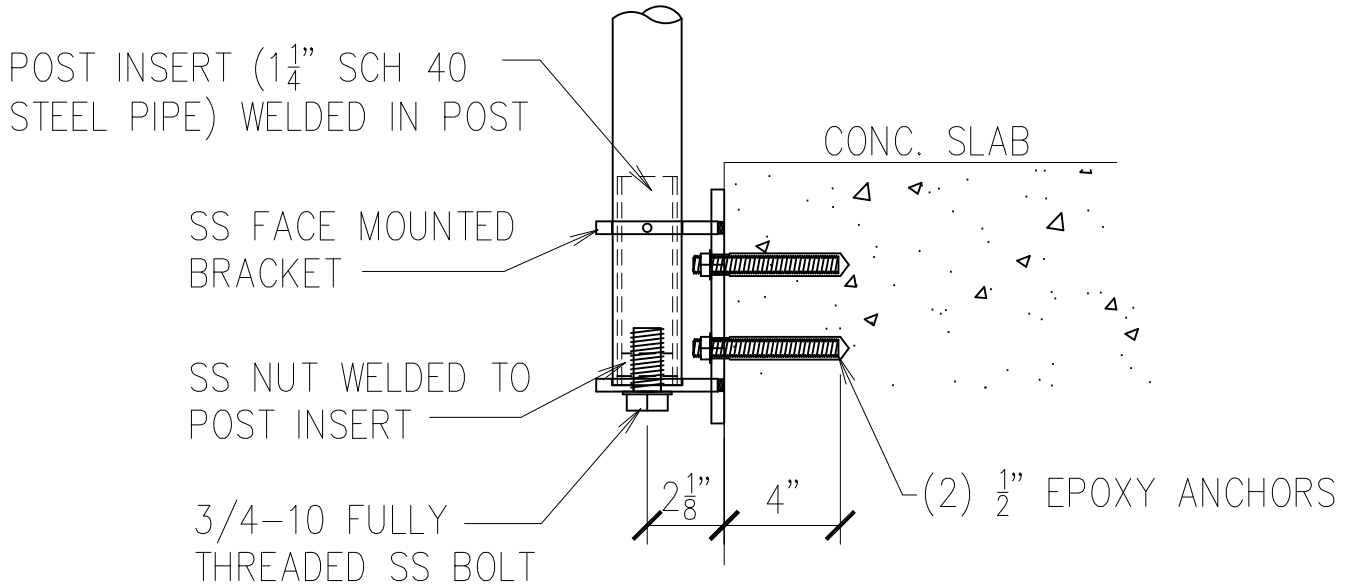
WELDED STAIR MOUNTING
(CHANNEL STRINGER)



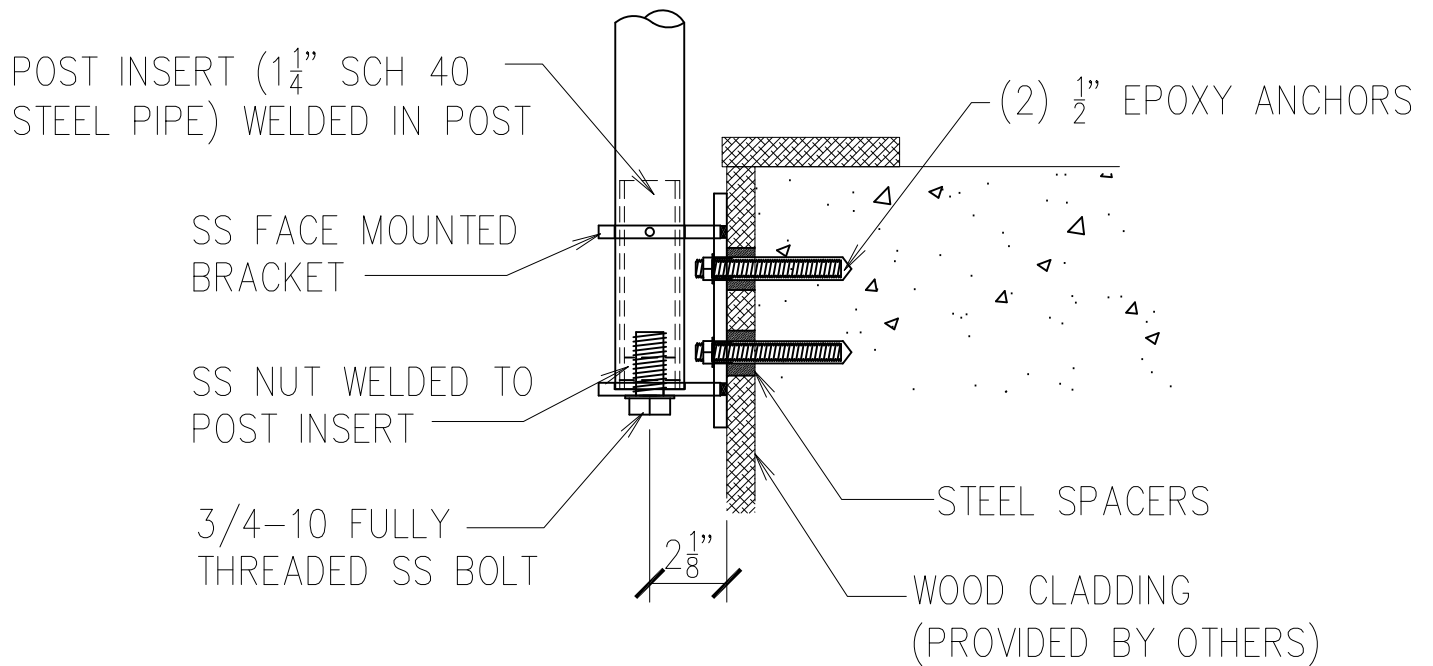
SIDE MOUNTED STAIR MOUNTING
(TUBE STRINGER)



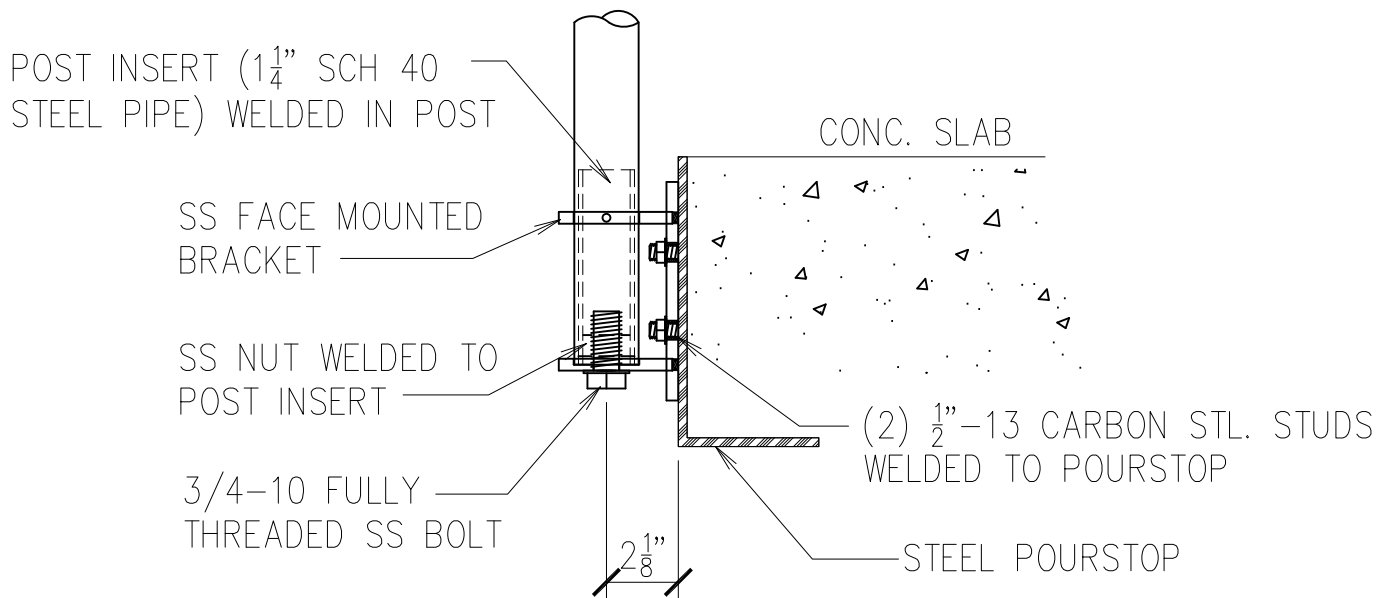
SIDE MOUNTED STAIR MOUNTING
(CHANNEL STRINGER)



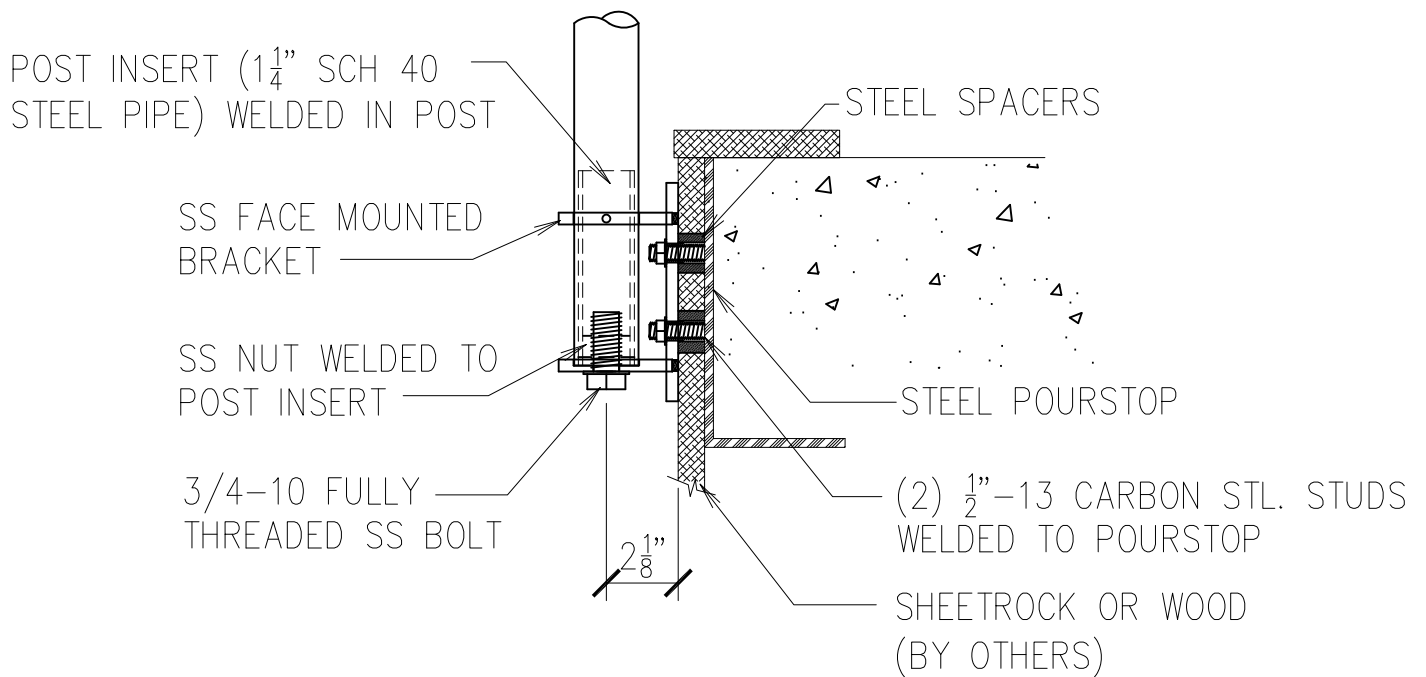
SIDE MOUNTING TO CONCRETE SLAB



SIDE MOUNTING TO CONCRETE SLAB OVER WOOD FACSLIA OR SHEETROCK



SIDE MOUNT ATTACHED
TO POURSTOP



SIDE MOUNT ATTACHED
TO POURSTOP OVER
WOOD FASCIA OR SHEETROCK